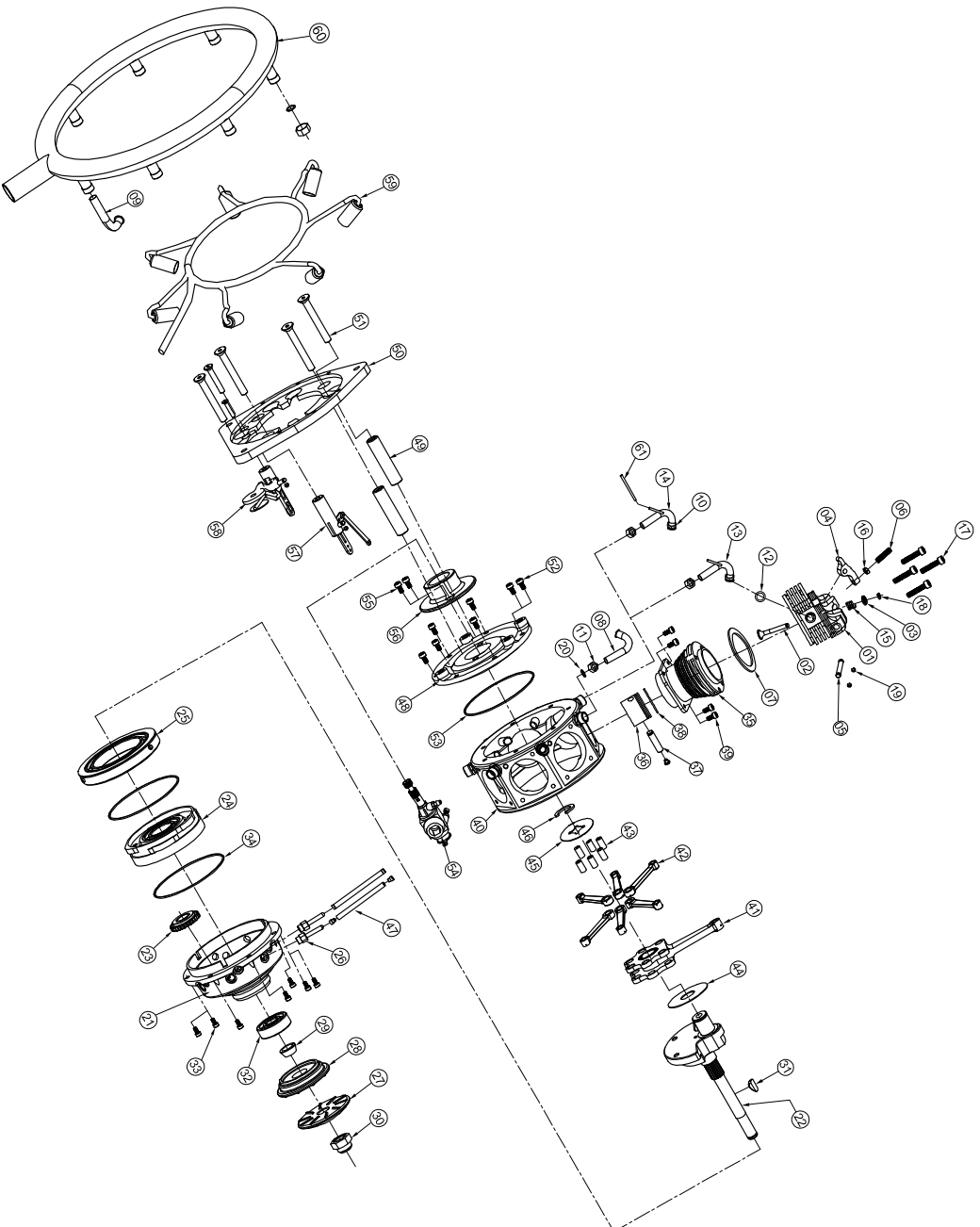


RADIAL ENGINE 7-35CC BLACK(UMSG407RB035)



S/NO	PART NO	PART NAME	QTY	S/NO	PART NO	PART NAME	QTY
01	UMS735001030	CYLINDER HEAD WITH VALVE GUIDE	01	32	BRD00308020	BALL BEARING (TOP COVER)	01
02	EVO073503600	VALVE	01	33	SSS630030080	M3X8 SOCKET HEAD CAPSCREW (BLACK TOP COVER)	07
03	EVO073503700	SPRING STAINER	01	34	ORR001500010	O-RING (TOP COVER)	01
04	UMS735001060	ROCKER ARM	01	35	UMS735003030	CYLINDER WITH SLEEVE	01
05	UMS735001070	ROCKER ARM PIN	01	36	EVO073501900	PISTON	01
06	SPS630030720 (M3X12MM)	ROCKER ARM SCREW	01	37	UMS735003080	PISTON PIN WITH BUSH ASSEMBLY	01
07	UMS735001080	CYLINDER HEAD GASKET	01	38	EVO073500400	PISTON RING	02
08	EVO073512500	INLET PIPE	01	39	SSS630030060	M3X6 SOCKET HEAD CAP SCREW (CYLINDER)	04
09	EVO073503400	EXHAUST PIPE	01	40	UMS735000400	CRANK CASE WITH MAINFOLD	01
10	EVO073503100	LOCK NUT (INLET&EXHAUST)	01	41	UMS735000400	CONNECTING ROD MAIN ASSEMBLY	01
11	EVO073503200	LOCK NUT-1	01	42	EVO073501800	CONNECTING ROD SMALL	01
12	EVO073512600	PIPE WASHER	01	43	EVO073502400	CONNECTING ROD PIN	01
13	UMS735001140	INLET PIPE WITH VACUUM PIPE-1	01	44	EVO073512400	SPRING WASHER (INNER)	01
14	UMS735001150	INLET PIPE WITH VACUUM PIPE-2	01	45	EVO073503300	SPRING WASHER (OUTER)	01
15	EVO073505200	VALVE SPRING	01	46	ERR001000000	CIRCLIP - CRANKSHAFT (CON)	01
16	NH1130000030	ROCKER ARM NUT	01	47	UMS735006910	PUSH ROD ASSEMBLY	01
17	SSS630040160	CYLINDER HEAD SCREW(M3X12MM)	04	48	UMS735006910	CRANK CASE BOTTOM COVER	01
18	ERR003019006	CIRCLIP (SPRING STRAINER)	01	49	UMS735006020	SPACER	01
19	ERR003020006	CIRCLIP (ROCKER ARM PIN)	02	50	UMS735006030	BASE PLATE	01
20	ORR001040010	O-RING (INLET PIPE)	01	51	SSS6300400500	MAGNUM/MSG ALLEN SCREW(BASE PLATE)	04
21	UMS735002140	CRANK CASE TOP COVER WITH BUSH LG GEAR	01	52	SSS630030080	SCREW SOCKET HEAD CAP SCREW (BOTTOM COVER)	07
22	UMS735002170	CRANK SHAFT ASSEMBLY	01	53	ORR001500010	O-RING (BOTTOM COVER)	01
23	EVO073502300	INTERMEDIATE GEAR WITH BUSH	01	54	UMS735006001	UMS CARBURETOR - 35CC	01
24	UMS735002180	CAM WITH CAM GEAR	01	55	SSS6300500600	M5x6 SOCKET HEAD CAPSCREW (CARBURETOR ADAPTER)	02
25	UMS735002190	SEALING RING WITH BEARING	01	56	UMS735006140	ADAPTER (GLOW ENGINE)	01
26	EVO073504000	CAM PIN GUIDE	01	57	UMS735006110	BELL CRANK ASSEMBLY	01
27	UMS735002090	PROPELLER WASHER	01	58	UMS735006120	CHOKE LEVER ASSEMBLY	01
28	UMS735002100	PROPELLER DRIVE (WITH/OUT MAGNET)	01	59	UMS735577000	GLOW PLUG WIRE ASSEMBLY	01
29	UMS735002120	P/DRIVE LOCK CONE	01	60	UMS735588000	SILENCER ASSEMBLY	01
30	EVO073502900	P/DRIVE LOCK NUT	01	61	PLTU040600400	NYLON TUBE	01
31	UMS790002140	WOODRUFF KEY	01				