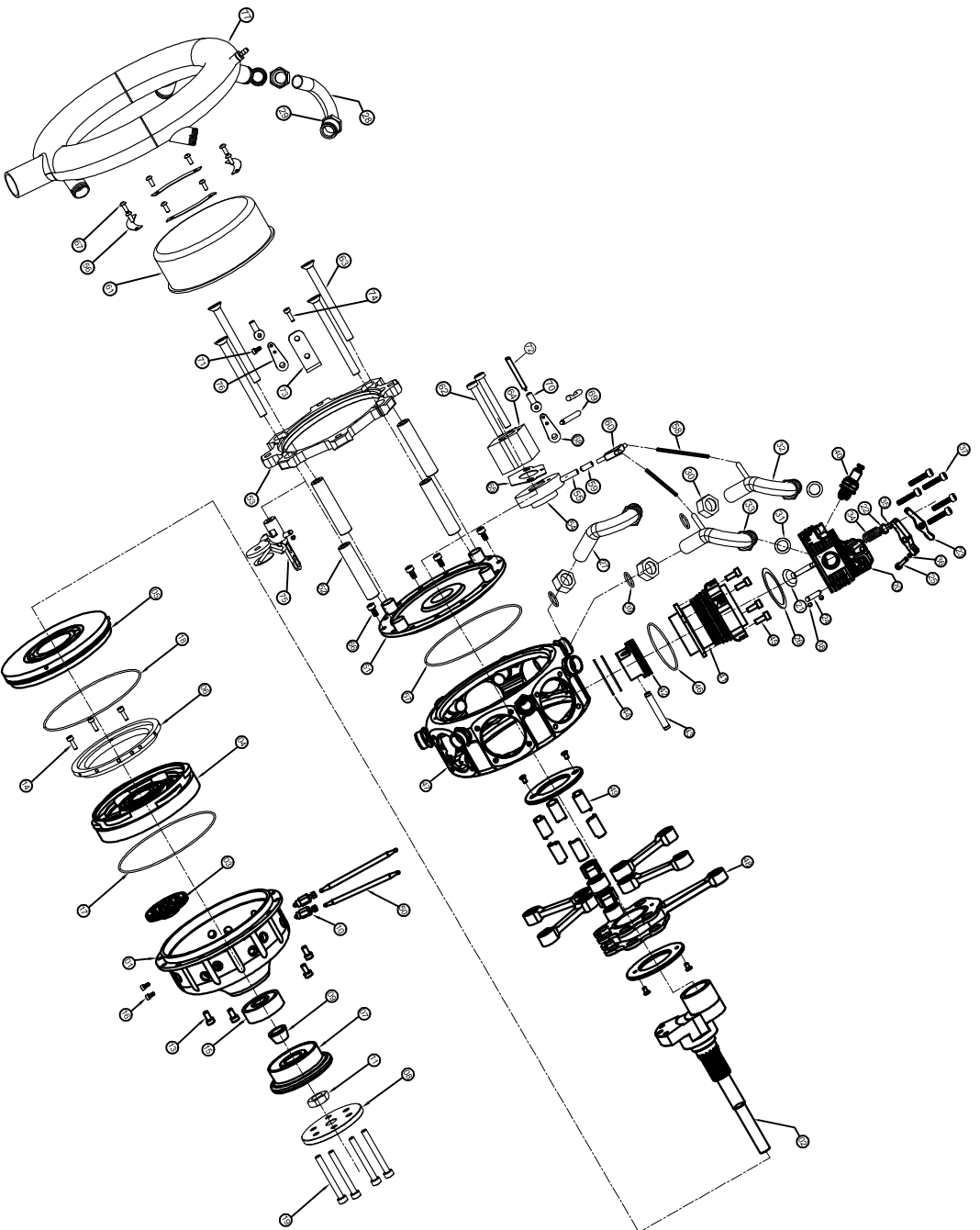


UWS 7-260 RADIAL ENGINE (PETROL)
(UMSB407RB260)



S.NO	PART NO	PART NAME	QTY	S.NO	PART NO	PART NAME	QTY
01	UWS726002100	CRANK CASE TOP COVER WITH DOWN LG GEAR	01	40	SPR001000000	SPARK PLUG	01
02	UWS726002110	CRANK SHAFT ASS'LY	01	41	UWS726003030	CYLINDER WITH SLEEVE	01
03	UWS726002120	INTERMEDIATE GEAR WITH BEARING	01	42	EV0726001900	PISTON	02
04	UWS726002130	CAM WITH CAM GEAR WITH BEARING	01	43	UWS726003080	PISTON PIN WITH BUSH	04
05	UWS726002140	SEALING RING WITH BEARING	01	44	EV0726004600	MAX10mm SOCKET HEAD CAP SCREW (CYLINDER)	01
06	UWS726002150	MAONET RING WITH MAONET	01	45	SS5630040100	CRANK CASE BOTTOM COVER	01
07	TMH525002090	PROPELLER DRIVE	01	46	ORR001400015	O-RING (CYLINDER)	01
08	TMH525002100	PROPELLER WASHER	01	47	UWS726004030	CRANK CASE WITH MAINFOLD	02
09	TMH525002110	P'DRIVE LOCKCONE	01	48	UWS726004080	CONNECTING ROD ASSEMBLY	02
10	TMH525002190	CAM PIN GUIDE ASS'LY	01	49	UWS726004080	CONNECTINGROD PIN	01
11	TMH525002130	P'DRIVE LOCK NUT	01	50	UWS726003000	PUSH ROD ASSEMBLY	01
12	SC5630040080	M3X8 SOCKET COUNTER SUNK HEAD SCREW (TOP COVER)	01	51	EV0726000500	CRANK CASE BOTTOM COVER	01
13	SS5630040080	M3X12 SOCKET COUNTER SUNK HEAD SCREW (CAM GEAR)	13	52	EV0726000900	SPACER	04
14	SC5630040120	M3X8 SOCKET COUNTER SUNK HEAD SCREW (TOP COVER)	03	53	TMH525006030	BASE PLATE	01
15	BRP003120370	BALL BRG (TOPCOVER)	01	54	EV0726004500	ADAPTER CARBURRETOR	01
16	SS5630020060	M3X8 SOCKET HEAD CAP SCREW (E DRIVE)	01	55	UWS726012800	PIPE CARBURRETOR	04
17	ORR001850015	O-RING(TOP COVER)	05	56	TMH525008150	IGNITION COIL CLAMP	01
18	ORR001850015	O-RING (SEALING RING)	01	57	ORR001850015	O-RING (BOTTOM COVER)	01
19	SS5630050540	M3X5 SOCKET HEAD CAP SCREW (E DRIVE)	06	58	PTLU04030090	VACUUM TUBE -A	02
20	UWS726001140	CYLINDER HEAD WITH VALVE GUIDE	01	59	PTU040300950	VACUUM TUBE -B	01
21	UWS726001090	VALVE	01	60	IGRC000301	Y-CONECTOR(7289)	01
22	UWS726001060	SPRING STRAINER	01	61	IGR001000000	IGNITION COIL WITH SENSOR	01
23	UWS726001060	ROCKER ARM	01	62	SS5630050450	M3X2mm SOCKET HEAD CAP SCREW (CARBURRETOR)	02
24	UWS726001070	ROCKER ARM PIN	01	63	SC5630060700	M3X20mm SOCKET COUNTER SUNK HEAD SCREW (SPACER)	04
25	TMH525001090	ROCKER ARM SCREW	01	64	CR5003000000	CARBURETOR (MALIBRO MAKE) WT-793A	01
26	EV0726004201	CYLINDER HEAD GASKET	01	65	GRSH02000000	CARBURETOR GASKET	01
27	EV0726011900	INLET PIPE	01	66	SS5630040080	M3X8 SOCKET HEAD CAP SCREW (BOTTOM COVER)	14
28	EV0726003400	EXHAUST PIPE	01	67	SS5630030080	M3Xmm SOCKET HEAD SCREW (IGNITION COIL CLAMP)	08
29	EV0726003100	LOCK NUT (INLET & EXHAUST)	01	68	TMH525006070	ADAPTOR (THROTTLE)	01
30	EV0726003200	LOCK NUT-1	01	69	UWS716008080	THROTTLE EXTENSION	01
31	EV0726012600	PIPE WASHER	01	70	BAUBL270030	CLEVIS	02
32	EV0726012000	INLET PIPE WITH VACUUM PIPE-1	01	71	SS5630030080	M3X8mm SOCKET BUTTON HEAD CAP SCREW(MD&R)	01
33	EV0726012100	INLET PIPE WITH VACUUM PIPE-2	01	72	TMH525006120	THROTTLE ROD	02
34	EV0726005200	VALVE SPRING	01	73	UWS716006090	T-CLAMP (THROTTLE&CHOKE ASS'LY)	01
35	TMH525001200	SPRING STRAINER LOCK BUSH	05	74	SS5630030050	M3X5 SOCKET HEAD CAP SCREW M.S BLACK (L CLAMP)	02
36	N15630000030	ROCKER ARM NUT	02	75	UWS726008080	CHOKE LEVER ASSEMBLY	01
37	SS5630040200	CYLINDER HEAD SCREW	01	76	TMH525006070	ADAPTOR (CHOKE)	01
38	ECR003032006	CIRCLIP(ROCKER ARM PIN)	01	77	EV0726007000	SILENCER ASS'LY	01
39	ORR00110015	O-RING (INLET PIPE)	01				